



Soccer Referees Orientation

Saturday October 28, 2023

2:30 pm to 4:30 pm

Boca Raton Community Center

Meeting Agenda

- Introductions and the SABR Organization
- SABR Web Site – “Referees Corner”
- SABR Soccer Season and Expectations
- Referee Mentoring
- Game Assigning Procedures
- FIFA Recent Key Rule Changes
- Jamboree Assignments and Plans

Introductions and Key Referee Contacts

Ray Saba/SABR Director of Referees

- 561-212-2607
- rsaba@sabrsoccer.net

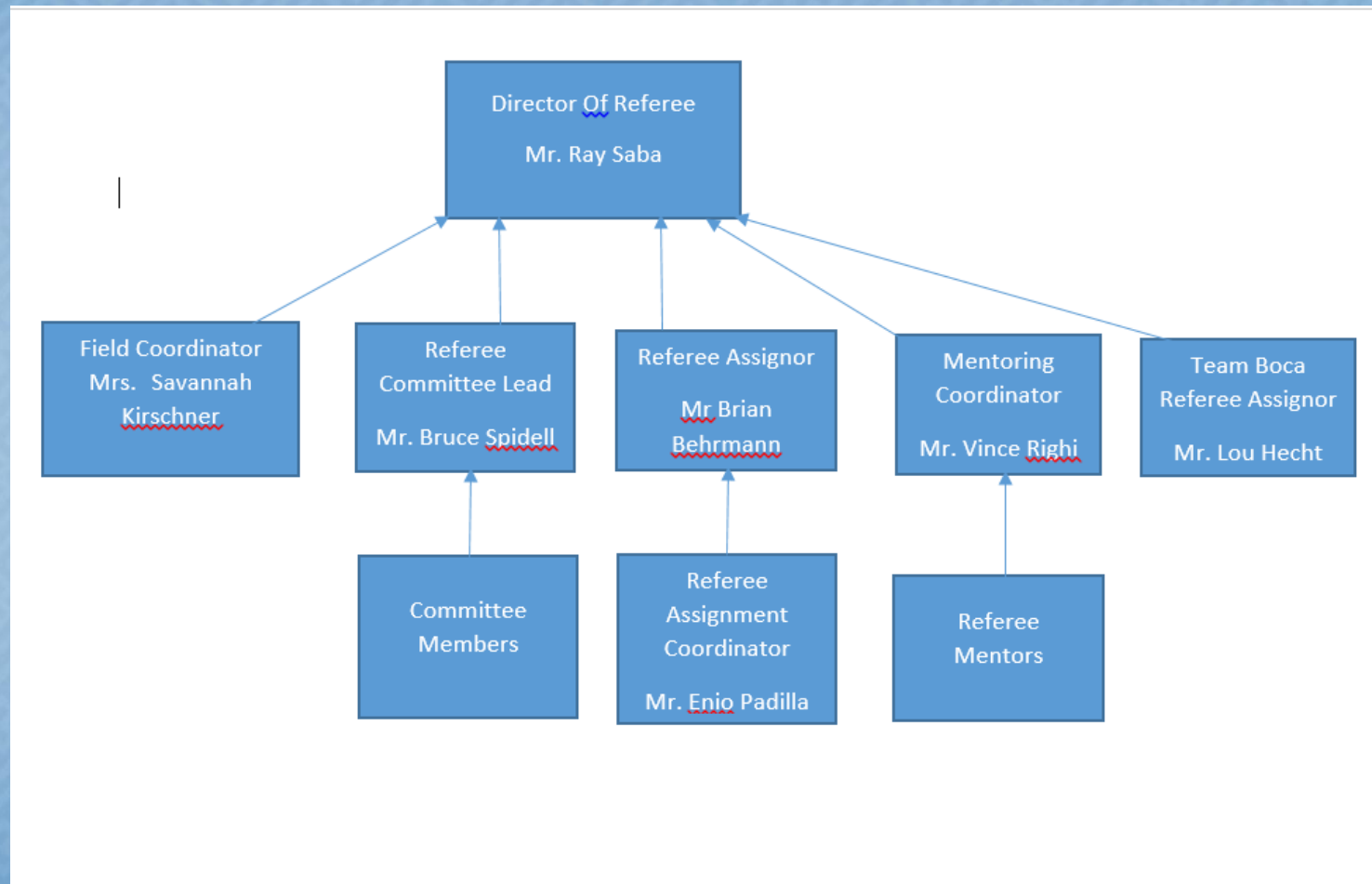
Brian Behrmann/SABR Recreational Game Assignor

- 561-504-5862
- briansabr@aol.com

Lou Hecht / Team Boca Travel Games Assignor

- 954-557-8021
- lou.hecht@aol.com

SABR Referees Org Chart



SABR Web Site – Referees' Corner

- 2024 Recertification Classes
 - Online, must be completed by end of December to referee after January 1
- W-9 Tax Forms and Payments
- Registration and Game Assigning Process
- Contacts for Referees
- Attendance, Preparation, Attire, and Time Management
- SABR Non-FIFA Rules
- Safety
- Tom Cherubin Cup Playoff Rules

www.sabrsoccer.net

2024 Recertification is on-line

- 2024 Referee Recertification is now open.

You must have the ability to view YouTube videos.

All of your 2024 classroom re-certifications are now online. Along with the testing requirements, you also can pay online via PayPal.

Here is a link for more guidance from FSR on how to recertify:

<https://www.flsoccerrefs.org/annual-recertification/>

- Don't delay your 2024 re-certification. You will need to complete all of the online videos along with the testing requirements by December to be eligible to officiate January 1, 2024.

This is the only course that you need to register for (Online Grassroots Referee Course). Registering in any other open Referee course, will create issues, and will delay your 2024 re-certification with US Soccer.

SABR Referee's Payment Schedule

Recreational League

Age Group	Referee	Assistant Referee
U9, U10	\$30	\$20
U11	\$36	\$22
U12	\$42	\$26
U15	\$62	\$38
U19	\$66	\$40

Referee Payment Process

- All of us must fill out the IRS W-9 form and return it to:

Mr. Robert Rollins,

The Beacon Group, Inc.,

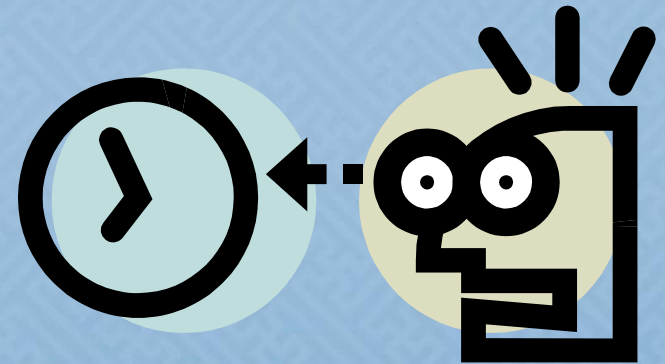
6001 Broken Sound Parkway, NW, Suite 500.

Boca Raton , FL 33487

- You will be mailed a check approximately every two weeks
- You will receive an IRS Form 1099 form for your 2023 tax filing if you earned over \$600 – likewise for your earnings after January 1, in early 2025

ON TIME, BEING PREPARED and LOOKING PROFESSIONAL

- Attributes of a SABR Referee
- Keys to gaining the respect of the coaches, players and spectators



Attendance

- Arrive 30 minutes early before each game
- If a referee does not show up, then please follow these procedures:
 - Try to contact Mr. Brian Behrmann
 - If you cannot contact Mr. Behrmann or if he does not have a substitute available, you should see if there is another licensed referee in the area who can act as a linesman.
 - Unless that referee just finished a game at the same level, you should still try to contact Mr. Behrmann before having that person step in.
 - Any tardiness should be reported to Mr. Behrmann
 - If you cannot find a suitable linesman, then you can use a “club linesman” if the coaches agree. A club linesman may NOT be paid.
 - A club linesman may only point the flag when a ball leaves the field of play; he may NOT call offside.
 - If the scheduled linesman shows up after the game has started, they may take over for the “club linesman” with the referee’s permission.

Preparedness

- **Head Referee (Center Referee)**
 - Coin for starting game
 - Working whistle
 - Watch or stopwatch (DO NOT use your cell phone)
 - Game report and pen or pencil
 - Your red and yellow cards
 - Flags
- **Assistant Referee (Linesman)**
 - Flags
 - Have all items listed above for Head Referee in the event you need to step in if the head referee does not show.

Attire

- Wearing the proper Referee Uniform
 - Yellow shirt
 - Black shorts
 - Long black socks with two stripes above the ankle
- Shirt must be tucked in and socks have to be pulled up for the entire duration of the game.
- We need to set an example for the coaches and players

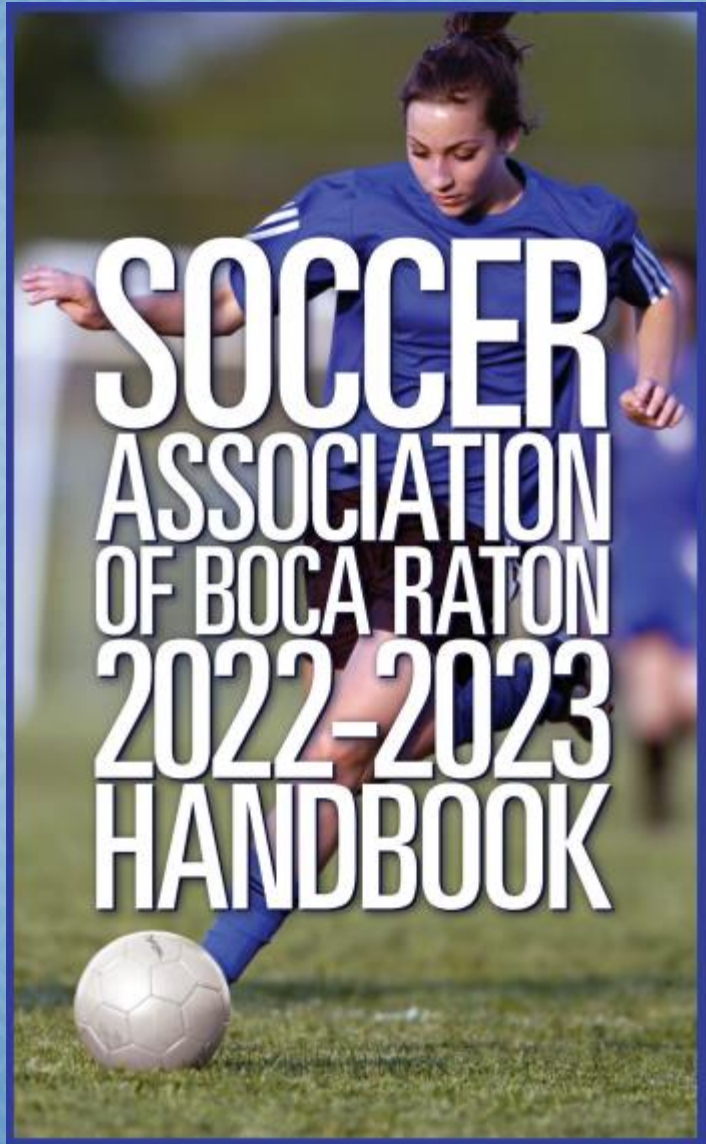
Time Management

- Time management of the soccer game IS the responsibility of the referee
 - NOT the coaches...
 - NOT the players and...
 - NOT the administrators.
- SABR works very hard to schedule as many games as possible to optimize the limited number of soccer fields, thus it is extremely important that we keep the games on time.
- Delays due to injury, weather or other reason you deem appropriate can be made up by adding time at the end of the game at our discretion.
- **BOTTOM LINE: TRY TO KEEP ALL GAMES ON SCHEDULE.**

Behavior On the Field

- Be decisive in your calls
- Blow your whistle loud and make sure the coaches and players hear you
- Be a teacher to the younger players and explain the fouls/calls (U9/U10)
- Call your fouls with respect to the age group, gender and the type of play
- Be consistent with your calls

SABR Non-FIFA Rules



- Many are covered in your SABR Handbook
- Read the Handbook and print pages from the SABR Web Site – “Referee’s Corner”
- A PDF copy of the handbook can be found on the home page of the SABR web site

SABR Non-FIFA Rules--Length of Games, Size of Ball, Offside, and Free Kicks

Description	U9 & U10	U11 & U12	U15	U19
Ball Size	4	4	5	5
Max No. Players	7	9	11	11
Min. No. Players	5	6	7	7
Length of Halves	25 Minutes	30 Minutes	35 Minutes	40 Minutes
Free Kicks	Indirect & Direct	Indirect & Direct	Indirect & Direct	Indirect & Direct
Opponents Distance on Free Kicks	6 Yards	10 Yards	10 Yards	10 Yards
Penalty Kicks	Yes	Yes	Yes	Yes
Referee Explains Foul to Player	Yes	No	No	No
Retake Throw Ins (1)	Only U9's	No	No	No
Offside	Yes (BOL)	Yes	Yes	Yes
Heading the ball	No	No (Yes BU12)	Yes	Yes
Build-Out Line	Yes	No	No	No

SABR Non-FIFA Rules

Substitutes



- A team CAN substitute on any throw-in as long as the team doing the throw-in is also doing a substitution. In other words, the team doing the throw-in may always ask permission to substitute, while the team not doing the throw-in may only ask permission to substitute if the other team is doing so.
- BOTH TEAMS may substitute:
 - On either team's goal kick,
 - After a goal,
 - After a half,
 - After you stop the game due to injury,
 - Water breaks,
 - After the regular time of the game has expired if an overtime period is provided.

SABR Non-FIFA Rules

Substitutes

- All coaches must advise you before substituting during the above situations
- Be sure that the substitutes are standing near the center line before you allow them enter the field
- Be sure that the players leave the field before the substitutes enter the field
- Be sure each team has the correct number of players before restarting the game
 - Assistant referees should help make sure the number of players is correct and wave their flag if play restarts and one team has too many players.

SABR Non-FIFA Rules

Water Breaks

- Water breaks are REQUIRED
- Approximately mid-way through each half
- No more then 1-2 minutes to allow players to get a drink
- Game clock is NOT stopped
- Substitutions are allowed

SABR Non-FIFA Rules

Water Breaks

- Players are supposed to stay on the field of play
- Encourage players to get back on the field after 1-2 minutes have passed
- If a team is delaying the game during a water break, you may:
 - Politely warn the coaches
 - Give the coach a yellow card after the first warning

SABR Non-FIFA Rules

Coach Attire

- Coaches and assistant coaches are supposed to wear an official SABR coach shirt (white) unless they are also an administrator and are wearing their blue shirt.
 - Use discretion if there seems to be a valid reason why the coach is not wearing an official shirt.

SABR Non-FIFA Rules

Injuries



- Both teams may substitute following an injury.
- Only coaches and assistant coaches are allowed to attend to an injured player on the field after they are called in by the referee.
 - Discourage coaches and parents from entering the field without your permission but use discretion in your sanctions if they run onto the field after their player/child is injured.
- If a coach comes on the field, with or without your invitation, the player, unless it is the goalkeeper, **MUST** be substituted

SABR Non-FIFA Rules

Injuries, Continued

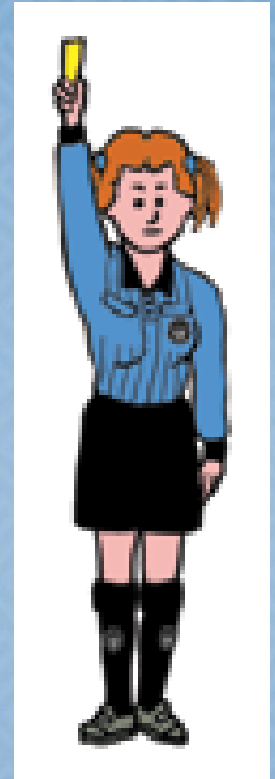


- If a player is injured and cannot return, e-mail the Director of Referees:
 - Date
 - Team Gender, Age Group and Team Name (e.g., GU15 Revolution)
 - First and Last Name of the Player
 - Nature of the Injury

SABR Non-FIFA Rules

Yellow Cards

- When a player is issued a **YELLOW CARD** the player must be substituted to allow for a “cool down” period
- Player may re-enter game at the next opportunity the team can substitute



Red Cards

- If you issue a **RED CARD**, be sure to report the incident via e-mail to **your Assignor and the Director of referees.**
- A **red card** can be issued for one of two reasons:
 - Straight red card for serious foul play, violent conduct, etc.
 - Participant receives two yellow cards in one game
- Include in your report the following information:
 - Date
 - Team Gender, Age Group and Team Name (e.g., GU15 Revolution)
 - First and Last Name of the Player, Coach or Spectator
 - Nature of the Misconduct leading to the Red Card



Keep Up with Game

- Use your diagonals to maximize your view of the field of play
- Limit your walking to when the ball is out of play
 - This includes U9 and U10 age groups
- Know your limitations
- Be consistent with your calls
- Can only be consistent if you are in a proper position to make the calls

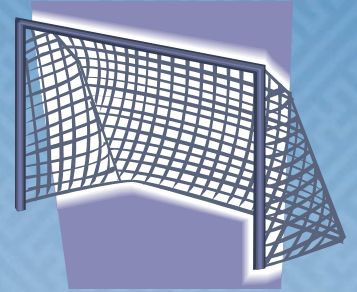
Deliberately Handling the Ball

- Handling the Ball Deliberately generally means using your hand or arm to deflect a ball intentionally
- Player could have avoided the touch, but chose not to do so
- An accidental event that creates an advantage is not considered a deliberate hand ball
- Need to judge the INTENT of the player
- Making yourself “bigger” DOES constitute intent, even if the player didn’t “mean to” use their arm

Other Considerations

- No Jewelry – PERIOD!
 - Except medical bracelets that must be taped
 - Include hair ties around the wrist and **NEW EARRINGS**
 - Earrings cannot be covered by band-aids on earlobes
 - If you do not enforce the “no jewelry” rule, it makes it harder for the referee next week to do so.
- Be sure to **enforce the Technical Area** with the coaches at the beginning—use cones to define the area
 - 10 yards on either side of the centerline
 - 1 yard behind the touch line
 - Give warnings for first infraction, then greater discipline
- Ask the coaches or SABR Administrators to ask their **spectators to sit on the opposite side of the field**
- **DO NOT** engage with the spectators
- Ask the coaches or SABR Administrators to help you manage the spectators
 - Stop the match until the coaches deal with their team’s parents

Safety



Goals

- ALL GOALS must be **properly secured** prior to beginning any game – this include those not on the field of play
- If goals are not **properly secured**, advise the Coaches/Division Representatives
- Coaches are responsible for moving the goals – you just need to make sure they are lined up **properly and secured**

Safety



Lightning

- Most fields have **lighting detectors**
 - When you hear the detector sound, have everyone get off the field
 - Safe to return when you hear 3 short blasts
- Use the **“30-30 Rule”** and **Common Sense**
 - If you see lighting, check your watch
 - If thunder occurs before 30 seconds, you need to have everyone get off the field and into a sheltered area
 - Wait 30 minutes following the same 30 second rule before allowing players coaches and spectators back onto the field

NOTE: LIGHTING DETECTORS HAVE BEEN KNOWN TO FAIL – IF IN DOUBT REFER TO NO. 2

Referees Need to Set the Tone for the Entire Season

- **CONSISTENTLY** enforce the “Rules of the Game”, “Non-FIFA Rules”, and “Other Considerations”
- Establish a positive, professional relationship with the coaches, players and spectators
- We want them to be our advocates, not our adversaries
- Be decisive and blow your whistle loud so everyone can hear it
- Keep up with the pace of the game
- Have fun and let the **players play!**

Referee Mentoring

- SABR will be doing Referee Mentoring to help improve the refereeing skills of our new referees.
- We will be on the field starting in November and will be observing and providing feedback on your performance to both you and SABR.

These are the
required **YELLOW**
uniforms for
recreational games

Recreation is
YELLOW only.



SABR Soccer Season

- Starts with the Jamboree – November 4
assignments today
- Regular Season Games – Fri., November 10
- Playoffs begin Tuesday, February 13
- Tom Cup – Saturday, March 2
- All-Star Games – March 8 and 9

Game Assigning – Brian Behrmann

<https://sabr.soccerref.net/>

(new website)

RECENT FIFA RULE CHANGES ADOPTED BY SABR

This is NOT an exhaustive list, since many of the changes have little or no relevance to recreational games and/or are very obscure. See <https://www.theifab.com/law-changes/latest/> for more information.

- Goal Kick – The ball does not have to leave the penalty area before being played.
 - Many coaches do not know about this change that was implemented several years ago!
- The ball is in play once it is kicked and moves.
 - Kickoffs may go backwards.

RECENT FIFA RULE CHANGES ADOPTED BY SABR, CONT...

- Player leaving field to commit offense -- If the referee stops play for an offense committed by a player, inside or outside the field of play, against an outside agent, play is restarted with a dropped ball unless an IFK is awarded for leaving the field of play without the referee's permission; the IFK is taken from the point on the boundary line where the player left the field of play.
- Duration of match – Goal celebrations will henceforth be listed separately to emphasize that they often result in a significant amount of time being lost, for which the referee makes allowance.

RECENT FIFA RULE CHANGES ADOPTED BY SABR, CONT...

- DOGSO – For handball offences in the “denying a goal or an obvious goal-scoring opportunity (DOGSO) section of Law 12, the player is sent off wherever the offense occurs (except a GK within their penalty area).
- DOGSO – It is not always clear whether an action was an attempt to play the ball or a challenge for the ball (or both). The same principle should apply for challenging for the ball as attempting to play the ball. Where the referee awards a penalty for a DOGSO offence, the offending player is only sent off if the offence was committed without the possibility to play the ball.

RECENT FIFA RULE CHANGES ADOPTED BY SABR, CONT...

- Law 3 – The Players – Clarification that the referee should take action against an extra person on the field of play when a goal is scored only if the person affected the play
- Free Kicks – To stop interference with walls at free kicks, attacking players will have to be at least one meter away from the wall.
- Goalposts and crossbar – must be the same shape; both goals must be the same.

RECENT FIFA RULE CHANGES ADOPTED BY SABR, CONT...

- Handballs – Handballs in goal-scoring situations will no longer have to be deliberate. A goal scored directly from the hand/arm (even if accidental) is no longer allowed; however, if an accidental handball results in a goal scoring opportunity for a teammate, there is no offense.
- Offside – Additional wording clarifying the guidelines for distinguishing between ‘deliberate play’ and ‘deflection’ based on the expectation that a player who is clearly in an offside position should not become onside on all occasions when an opponent moves and touches the ball.

RECENT FIFA RULE CHANGES ADOPTED BY SABR, CONT...

- Penalty Kicks – The term ‘kicks from the penalty mark’ is to be replaced by the term ‘penalties (penalty shoot-out)’
- Penalty Kicks – Clarification that the GK must not behave in a manner that fails to show respect for the game and the opponent, i.e., by unfairly distracting the kicker
- Penalty Kicks – A player, substitute, or substituted player or team official may be cautioned or sent off during penalty shoot-out

RECENT FIFA RULE CHANGES ADOPTED BY SABR, CONT...

- Penalty Kicks – Clarification that warnings and cautions for team officials, as well as for players, are not carried forward into penalties (penalty shoot-out)
 - However, players who have been dismissed during regular time may not participate in the penalty shoot-out.
- Penalty Kicks – When the ball is kicked, the GK must have at least part of one foot touching, in line with, or behind, the goal line.
 - The ‘spirit’ of the Law requires the GK to have both feet on/above the line until the moment when the kick is taken, i.e., the GK may not stand behind (or in front of) the goal line.

RECENT FIFA RULE CHANGES ADOPTED BY SABR, CONT...

- Referee Interference – The ball will now be deemed to be out of play if it touches the referee at the start of promising attack, goes directly into the net, or results in a change of possession. Restart is a dropped ball.
- Dropped Balls – Dropped balls will be uncontested. It will be dropped for only one player and all other players must remain at least 4 meters or 4.5 yards away. The ball is dropped for the team with last possession, or the goalkeeper if play is stopped in the penalty area.

RECENT FIFA RULE CHANGES ADOPTED BY SABR, CONT...

- Dropped Balls – All players of either side, other than the designated player must be 4 meters (4.4 yds) away from the ball until it touches the ground. The ball becomes in play as soon as it touches the ground. No player may touch the ball until it has touched the ground.
- Dropped Balls – A goal may not be scored from a dropped ball until it has been touched by two different players. A dropped ball is the only restart which allows the first player who touched the ball to touch it a second time without penalty.

RECENT FIFA RULE CHANGES ADOPTED BY SABR, CONT...

- Yellow and Red Cards for Coaches – Referees may caution or send off not only players, substitutes, and substituted players, but also coaches, to hold them accountable for their language and actions. If the offending individual in the technical area cannot be identified, the senior coach will be carded.
- Coin Toss – Team winning the coin toss elects to take the kickoff or a specific side of the field.
- Substitutions – Players should leave the field of play at the nearest field line unless advised by the referee.

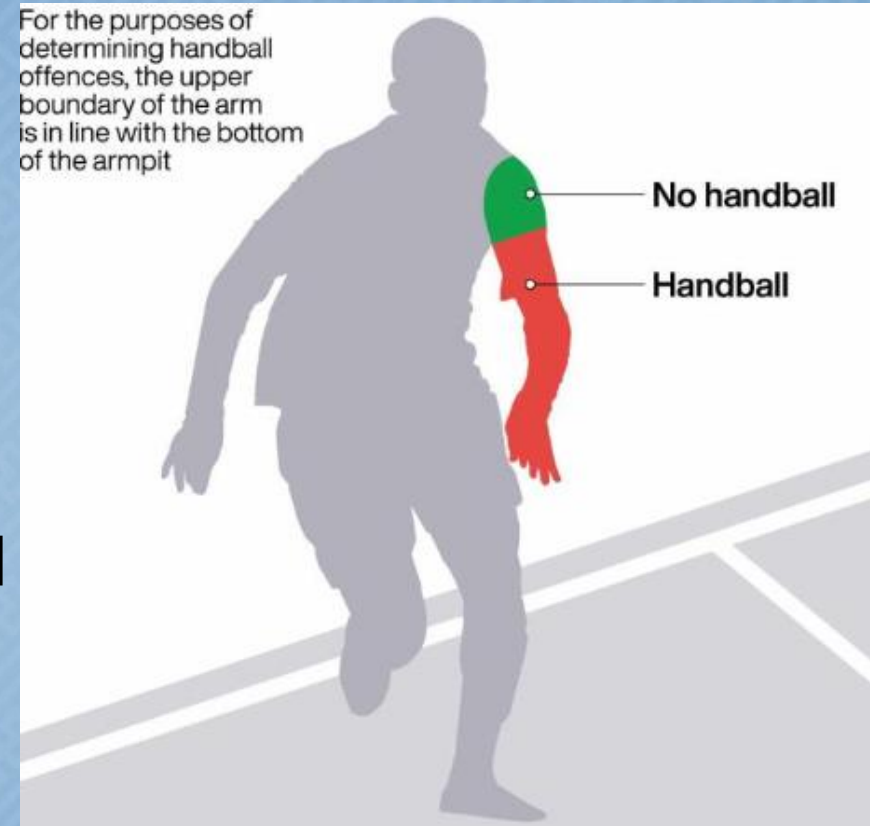
RECENT FIFA RULE CHANGES ADOPTED BY SABR, CONT...

- If the ball is in play and a player commits a physical offence inside the field of play against:
 - An opponent – an indirect or direct free kick or penalty kick.
 - A team-mate, substitute, substituted or sent off player, team official or a match official – a direct free kick or penalty kick.

All verbal offences are penalized with an indirect free kick. If the referee stops play for an offense committed by a player, inside or outside the field of play, against an outside agent, play is restarted with a dropped ball, unless a free kick is awarded for leaving the field of play without the referee's permission.

RECENT FIFA RULE CHANGES ADOPTED BY SABR, CONT...

- The shoulder is not part of the arm for handball; it is therefore a part of the body with which a goal can be legitimately scored and so must be considered when judging offside.



- It is emphasized that not every contact between the hand/arm and the ball is a handball offense.

RECENT FIFA RULE CHANGES ADOPTED BY SABR, CONT...

- Referees must judge the ‘validity’ of the hand/arm’s position in relation to what the player is doing in that particular situation.
- Accidental handball by a teammate before a goal is scored and accidental handball creating a goal-scoring opportunity have been removed as offenses.
- The offense of using a ‘trick’ to circumvent the law that prevents that prevents the goalkeeper from handling a deliberate kick from a team-mate will now apply at goal kicks. The goalkeeper is cautioned if responsible for initiating the ‘trick’.

Build out line (U9/U10)

- The build out line (BOL) is a special rule developed by US Soccer and adopted by SABR for U9 & U10 and serves 2 main purposes.
 - It promotes playing the ball out of the back in a less pressured setting by requiring the attacking team to stay behind the line while the GK first handles the ball.
 - It denotes where offside offenses may be called; previously, there was not offside for U9 & U10 but now it can be called, but not between the halfway line and BOL.



Build out line, Continued

- Build out lines should be equidistant between the penalty area line and halfway line.
- When GK has the ball in his/her hand during play from the opponent, the opposing team must move behind the build out line until the ball is put into play. Then GK can pass, throw or roll the ball into play (Punts and drop kicks are not allowed).
- After the ball is put into play by GK, the opposing team can cross the build out line and play resumes as normal.
- The opposing team must also be behind the build out line during a goal kick until the ball is put into play.

Build out line, Continued

- If GK punts or drop kicks, an IFK should be awarded to the opposing team from the spot or the goal area line parallel to the goal line near the spot.
- Ideally, the GK will wait to put the ball into play once all opponents are past the build out line.
 - The GK has the right to release the ball early if they so choose (or forget). Allow play to continue unless an opponent purposely crossed the build out line as the GK was about to release the ball.

Build out line, Continued

- To support the intent of the development rule, coaches and referees should be mindful of any intentional delays by opponents not retreating.
- Referees should be flexible when enforcing the 6 second rule where counting should begin when all opponents are behind the build out line.

Referee of the year Awards 2022-23

- Thanks, and specials appreciation to the awards sponsor Vince for his continuous support and dedication.
- Congratulations to the following recipients:
- Laura Padilla – The female young referee of the year.
- Agustin Monna – The male young referee of the year.
- The selections were based on: physical appearance, knowledge of the rules, mechanics, reliability, professionalism, movement and positioning, judgement and courage and consistency.
- More to come this coming year.

Well Deserved

*Congratulations
to the recipients*



Thanks to these individuals

- Referee Committee: Enio Padilla, Brian Behrmann, Ray Saba, Moises Corzo, Brian Martens, Colin Crossley, Joe Mayerchak, Bruce Spidell (Lead), Ehab Aziz, and Gary Levine.
- Head referee Mentor: Vince Righi.
- Referee Assignment Coordinator- Enio Padilla Reporting to BB.
- Newly-appointed Referee Field Coordinator – Savannah Kirschner Reporting to RS
- Brian Behrmann for going far and beyond his responsibility by reviewing SABR field assignments, Discipline Committee and payroll.